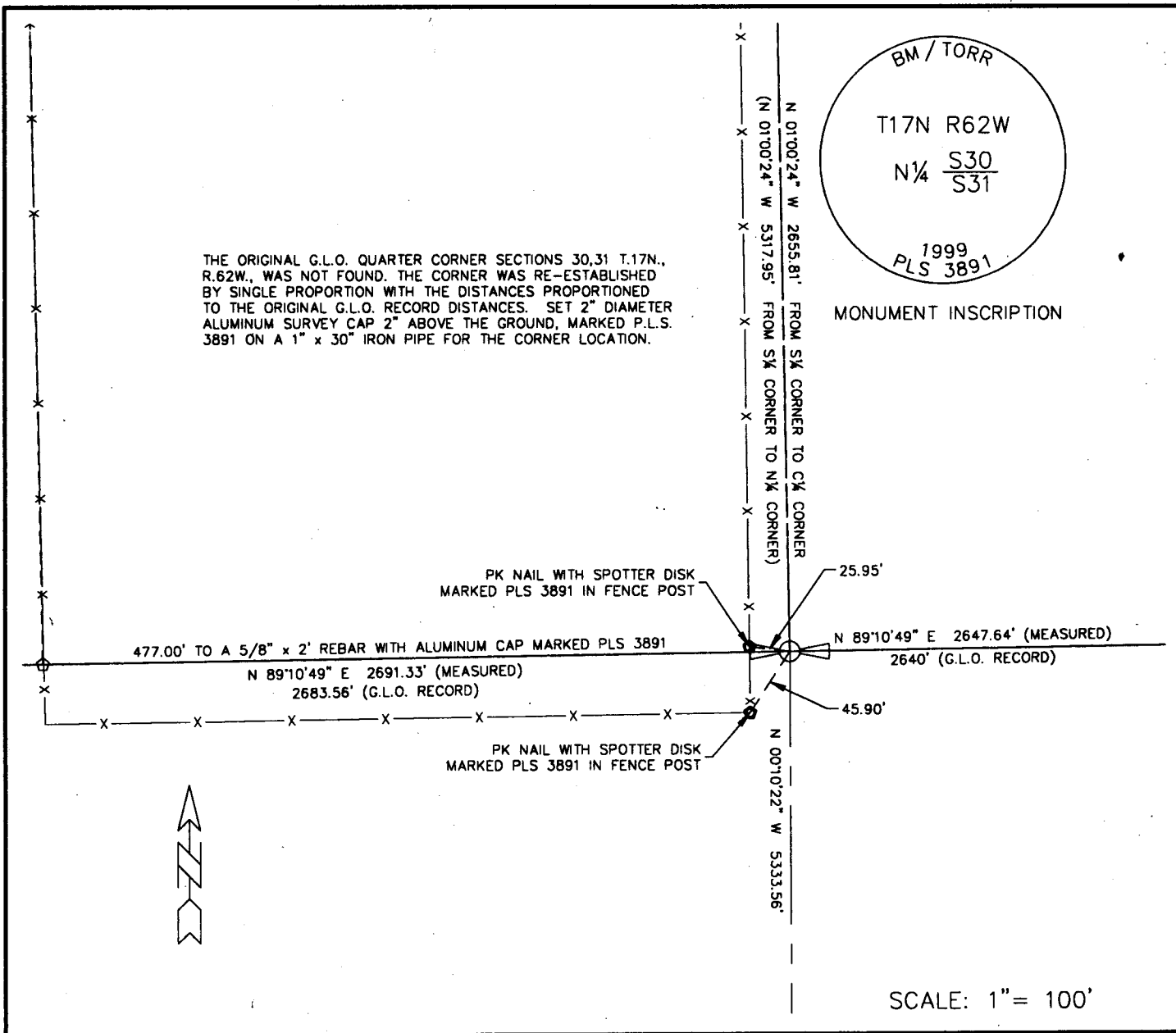


State of Wyoming Corner Record

(In compliance with the *CORNER PERPETUATION AND FILING ACT*, Wyoming Statutes, 1977, Section 36-11-101, et. seq., and the Rules and Regulations of the Board of Registration for Professional Engineers and Professional Land Surveyors)

Reverse side of this form may be used if more space is needed.

Record of original survey and citation of source of historical information (if corner is lost or obliterated). Description of corner monumentation evidence found and/or monument and accessories established to perpetuate the location of this corner. Sketch of relative location of monument, accessories, and reference points with course and distance to adjacent corner(s) (if determined in this survey). Method and rationale for reestablishment of lost or obliterated corner.



Date of Field Work: JUNE, 1999

Office Reference: V-031762.dwg

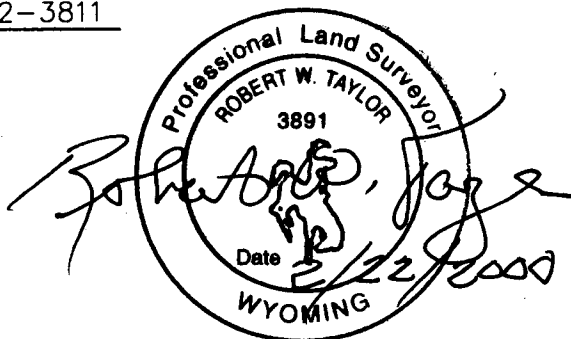
CROSS INDEX DIAGRAM

	1	2	3	4	5	6	7	8	9	10	11	12	13	14	15	16	17	18	19	20	21	22	23	24	25	
A																										
B																										
C		6		5		4		3		2		1														
D																										
E																										
F																										
G		7		8		9		10		11		12														
H																										
J																										
K																										
L		18		17		16		15		14		13														
M																										
N																										
O																										
P		19		20		21		22		23		24														
Q																										
R																										
S																										
T		30		29		28		27		26		25														
U																										
V																										
W																										
X		31		32		33		34		35		36														
Y																										
Z																										

Firm/Agency, Address

BenchMark of _____
Torrington, P.C.
2510 West "C" Street · P.O. Box 99
Torrington, WY 82240
 Phone Number: (307) 532-3811

This corner record was prepared by me or under my direction and supervision.
SEAL & SIGNATURE



Corner Name: N 1/4 CORNER
 SBRPEPLS/PLSW: March 1994

Section: 31 T17N R62W; 6th P.M. Cross-Index No.: V-03